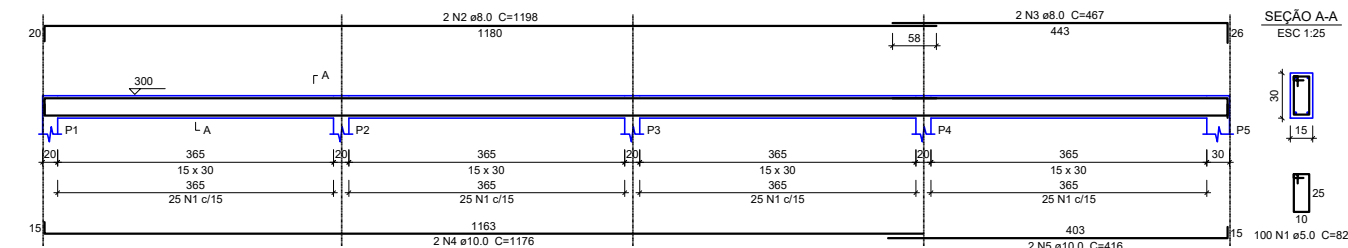
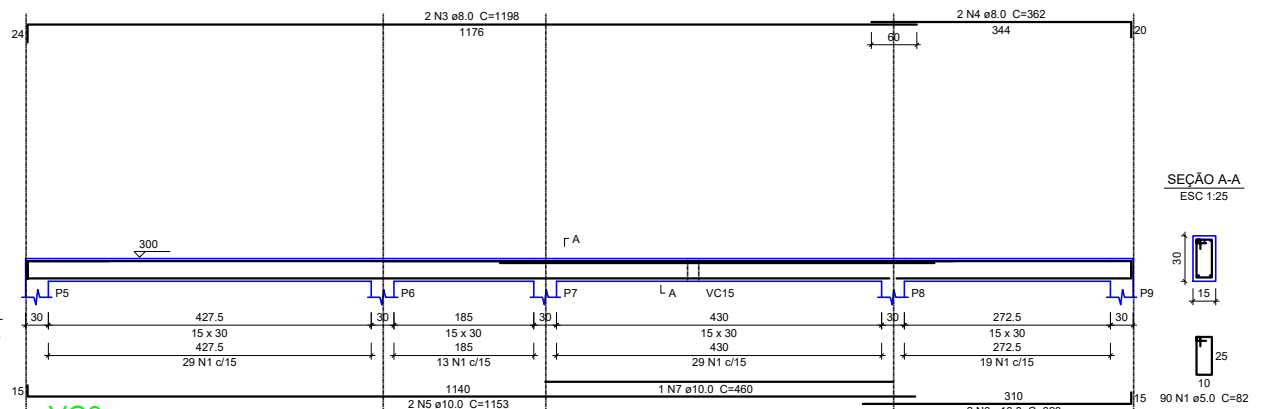


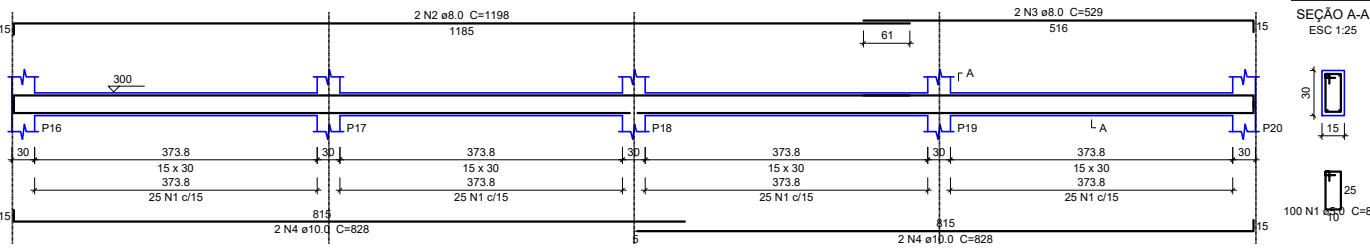
VC1
ESC 1:50



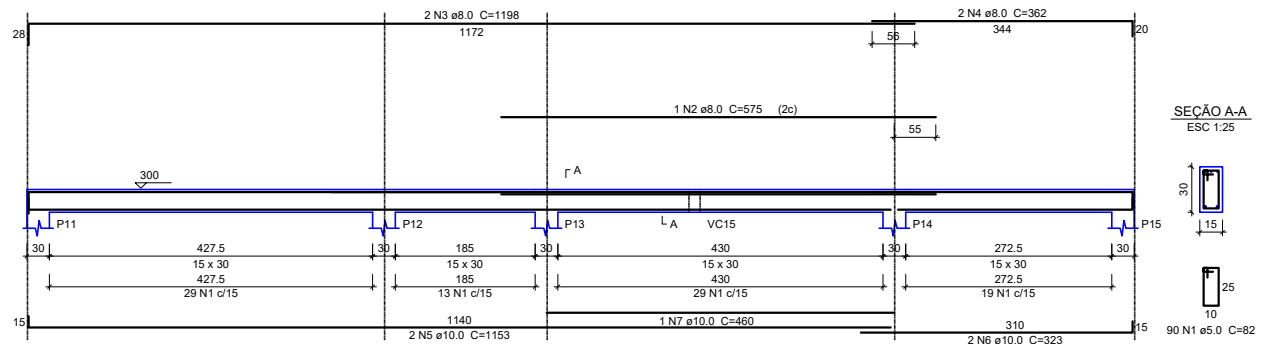
VC2
ESC 1:50



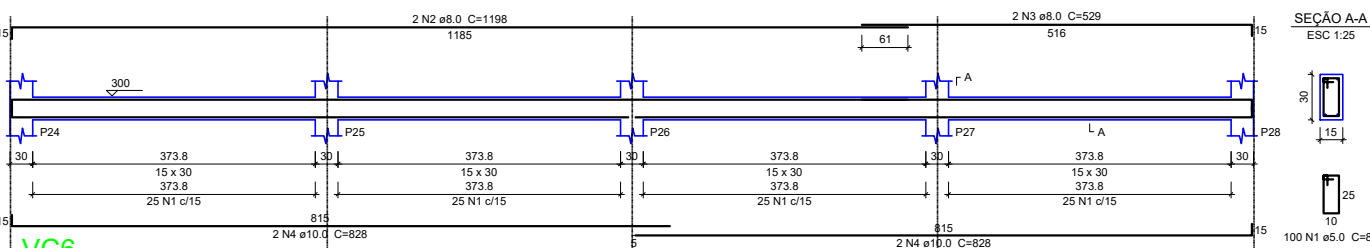
VC4
ESC 1:50



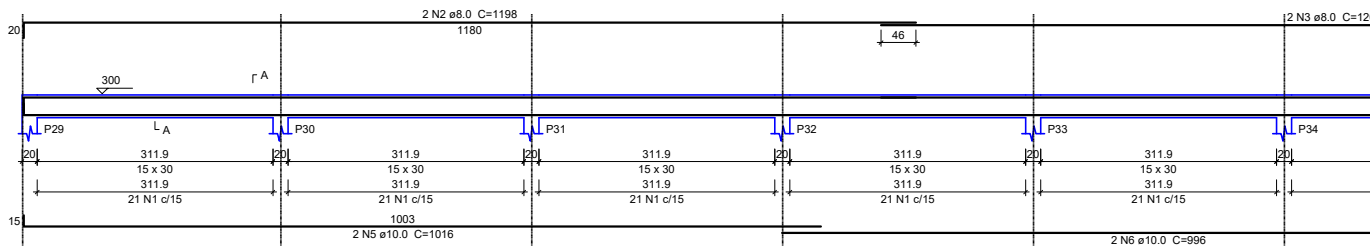
VC3
ESC 1:50



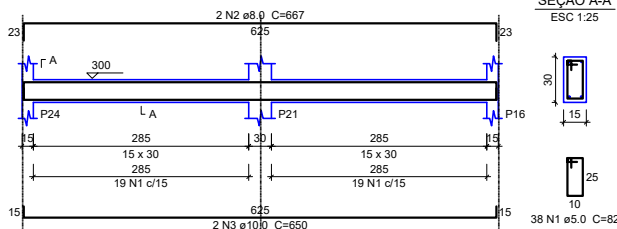
VC5
ESC 1:50



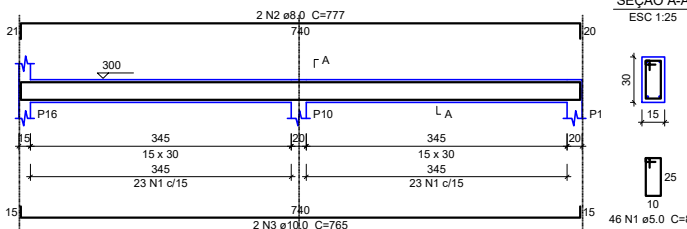
VC6
ESC 1:50



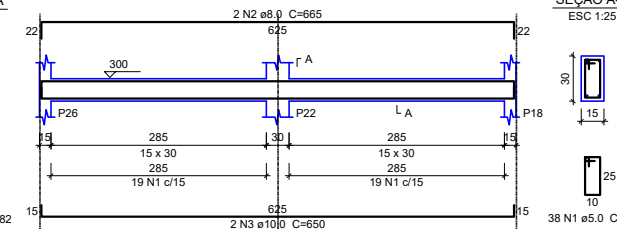
VC8
ESC 1:50



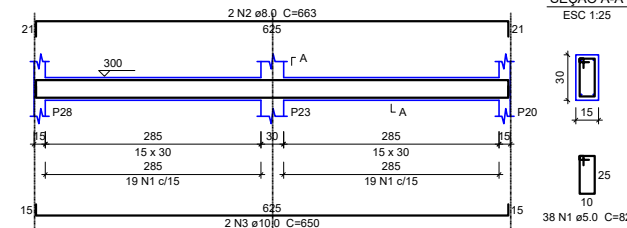
VC9
ESC 1:50



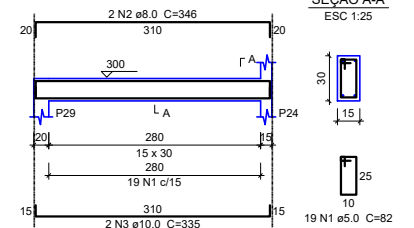
VC10
ESC 1:50



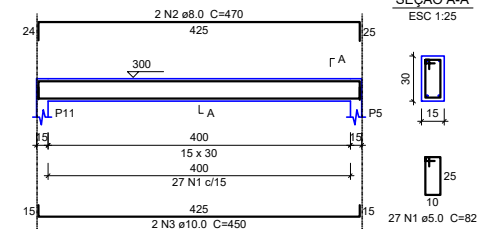
VC12
ESC 1:50



VC7
ESC 1:50



VC11
ESC 1:50



VIGA COBERTURA

ESC 1:200



PREFEITURA MUNICIPAL DE
VÁRZEA GRANDE
Mais por Você. Mais por Várzea Grande.

PREFEITURA MUNICIPAL DE VÁRZEA GRANDE

Av. Castelo Branco, Espaço Municipal, 2500 - Centro Sul, Várzea Grande/MT CEP 78125-700 - Fone/Fax: 65 3688 8000

PROJETO:
PROJETO ESTRUTURAL

OBRA:
REFORMA E AMPLIAÇÃO

UNID. ESCOLAR:
EMEB "BENEDITO ABRÃO NASSARDEN"

LOCALIZAÇÃO:
RUA I, QD 12, S/Nº, BAIRRO FORMIGUEIRO - VG

AUTOR DO PROJETO:

MATHEUS MARCANZONI LEITE
ENGENHEIRO CIVIL CREA-MT 042157

ESCALA:
INDICADA

DATA:
AGOSTO 2021

FOLHA Nº

05/
14